

# The Plains of Emu

## Vocal Line Only - Verses

Traditional



1. Oh Fare - well my coun - try, my kin - dred my  
2. The Iron bark the watt - les and gum - trees ex -  
3. Dearest Mo - ther thy love from my bo - som shall

5



lo - ver Each morn - ing and even - ing is  
tend - ing their shades und - er which rests the  
ne - ver de - part - but shall flou - rish un -

7



sa - cred to you. And I toil the long day - with - out shel - ter or  
shy - kanga - roo. Shall be felled by the blest who have hope - o'er them  
taint - ed and true. For hard was my fate - far from thee - to be

11



co - ver and fell the tall - gum - the black -  
bend - ing To ease their rude toil - though far -  
dri - ven But force gained the day and now I

13



butt - ed and blue Full oft - en I think of and  
ex - iled from you. Al - as I've not hope peace or  
suff - er for you. Oh spare her the tear and no

15



talk - of thee E - rin: Thy heath - cov - ered mount - ains are  
hon - our to grace - me Each feel - ing was crushed - in the  
charge - lay up - on - her And weep - not my No - ra, her

17

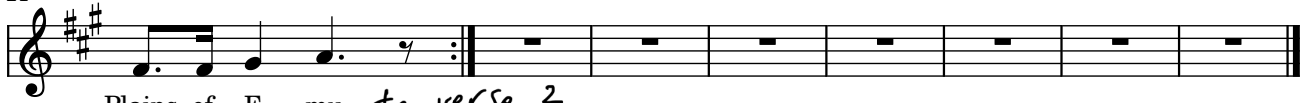


fresh in my view - Thy glens, - lakes and ri - vers, Loch  
bud - as it grew - While nev - er is stamped on the  
tears to re - new - But Che - rish her age, un - til

19



Conn - and Kil - kerr - an. While chained to the soil on the  
chains - that em - brace - me. And cease - less my pain on the  
night - closs - es on - her And think - of the swain who still



Plains of E - mu. to verse 2  
 Plains of E - mu. to chorus  
 thinks but of you. to final chorus

## Order

Chorus

Verse 1

Verse 2

Chorus

Verse 3

Chorus